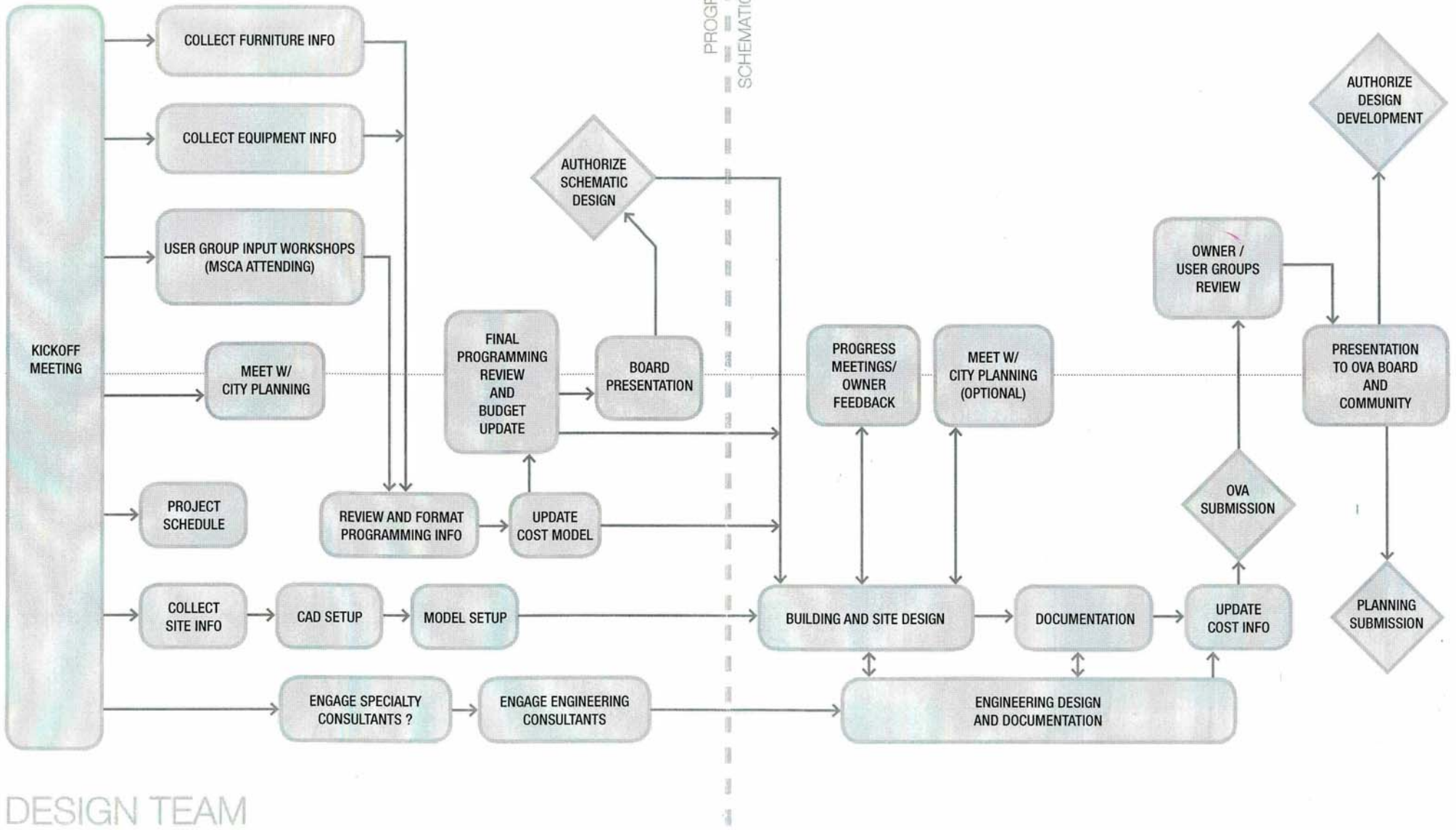


OAKMONT VILLAGE ASSOCIATION

OAKMONT CENTRAL RECREATION CENTER

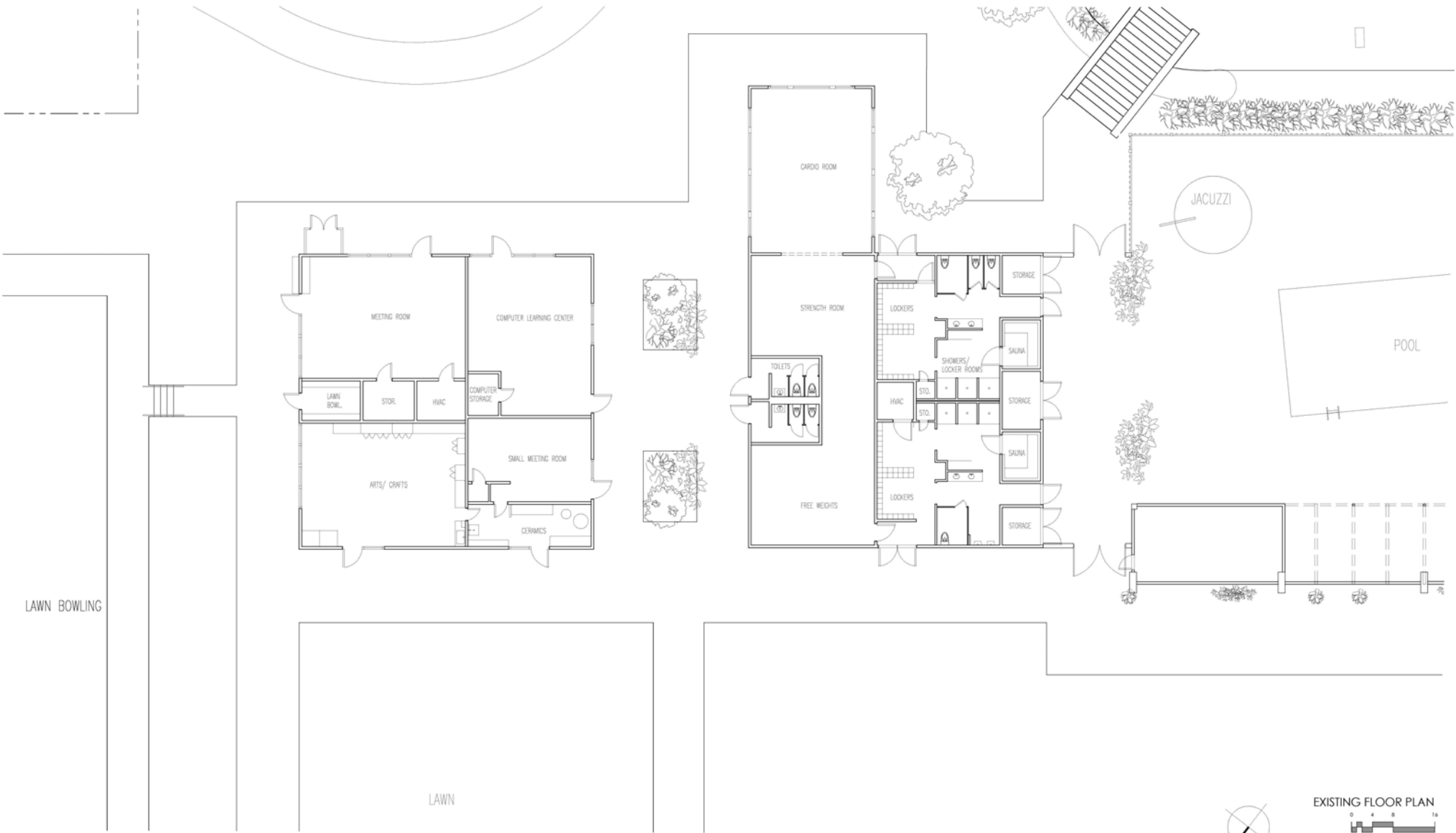
OWNER TEAM



DESIGN TEAM





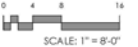


LAWN BOWLING

LAWN



EXISTING FLOOR PLAN



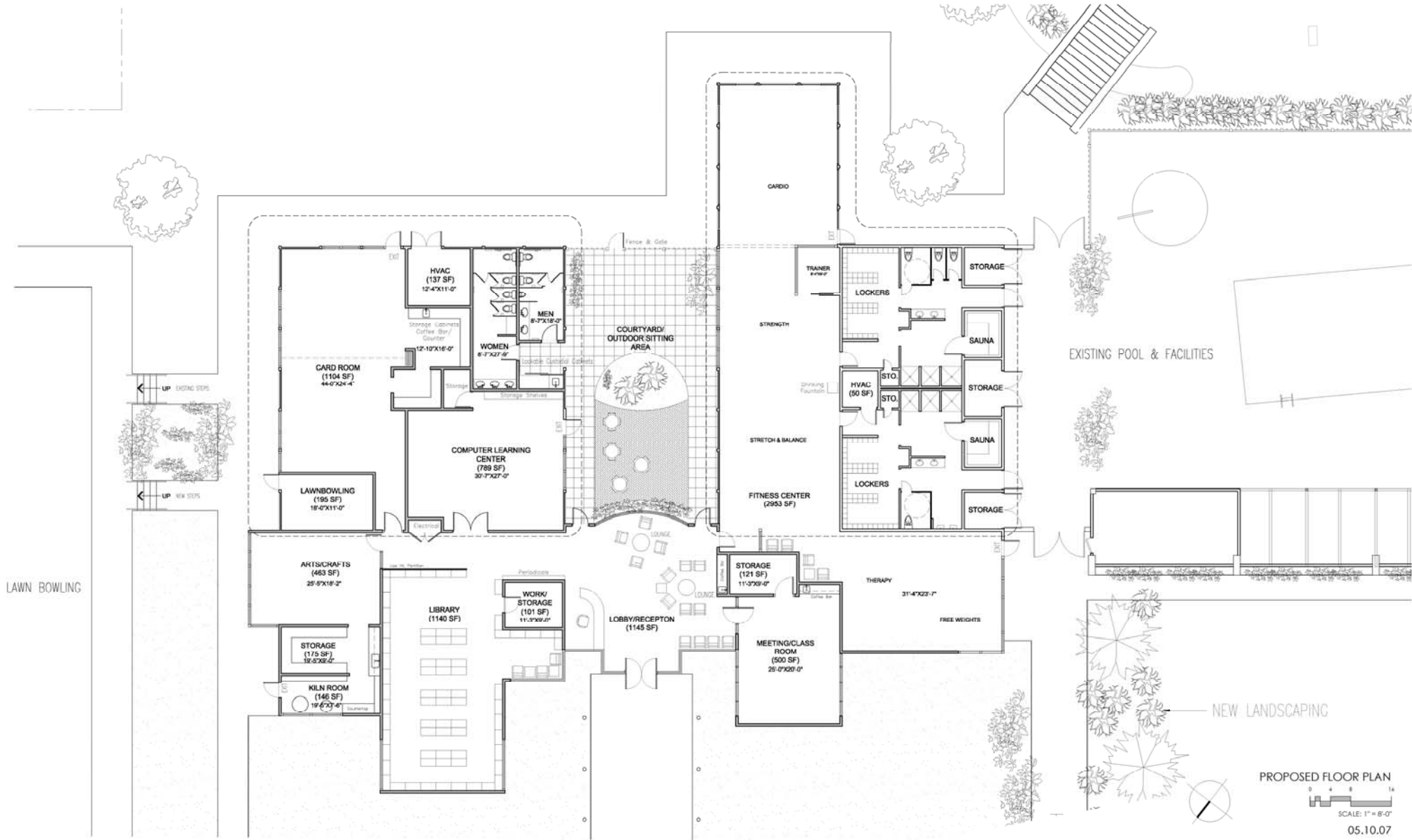
SCALE: 1" = 8'-0"

05.10.07

OAKMONT VILLAGES ASSOCIATION

OAKMONT CENTRAL RECREATION CENTER

ARCHILOGIX
DESIGN AND DEVELOPMENT GROUP



LAWN BOWLING

EXISTING POOL & FACILITIES

NEW LANDSCAPING

PROPOSED FLOOR PLAN



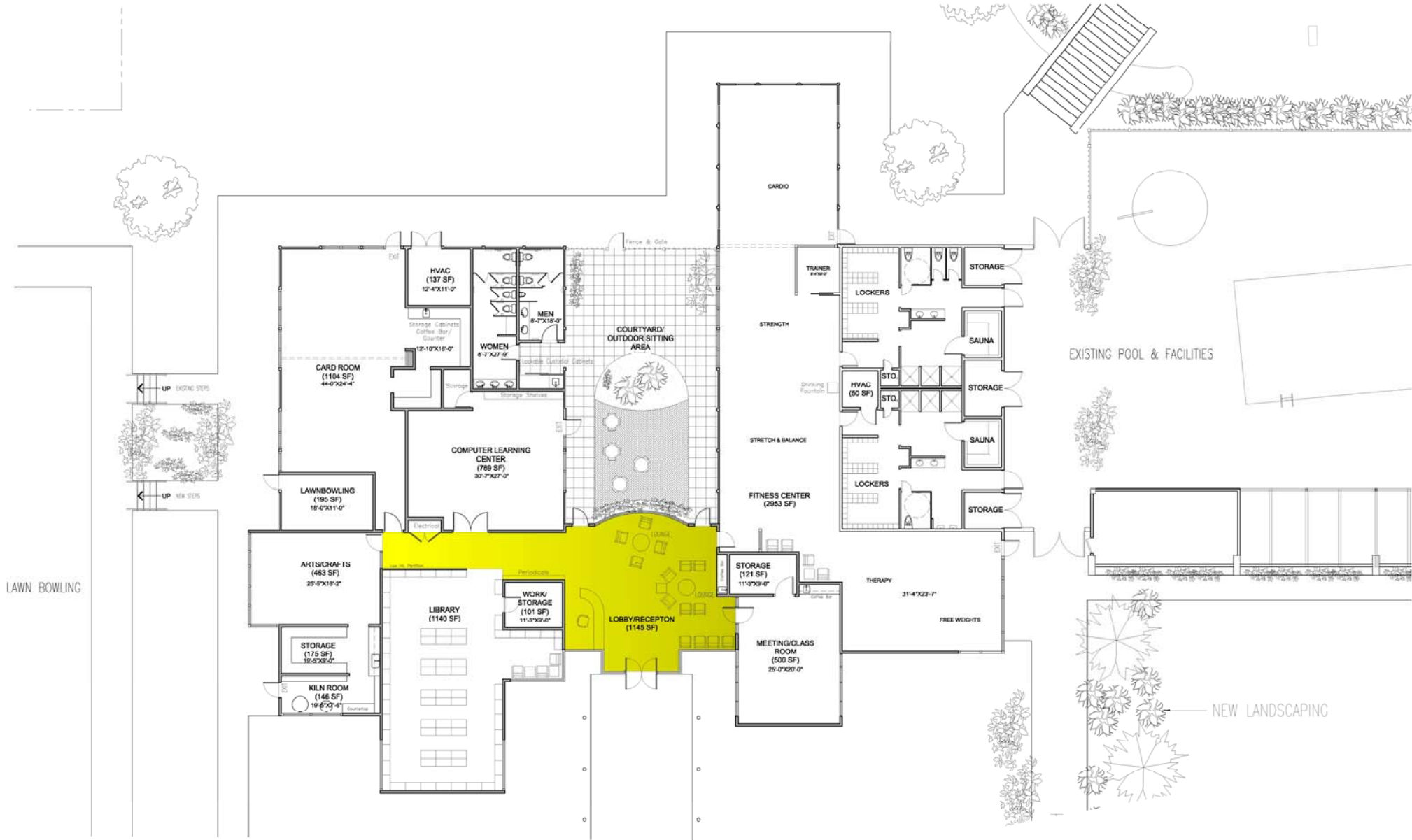
SCALE: 1" = 8'-0"

05.10.07

OAKMONT VILLAGES ASSOCIATION

OAKMONT CENTRAL RECREATION CENTER

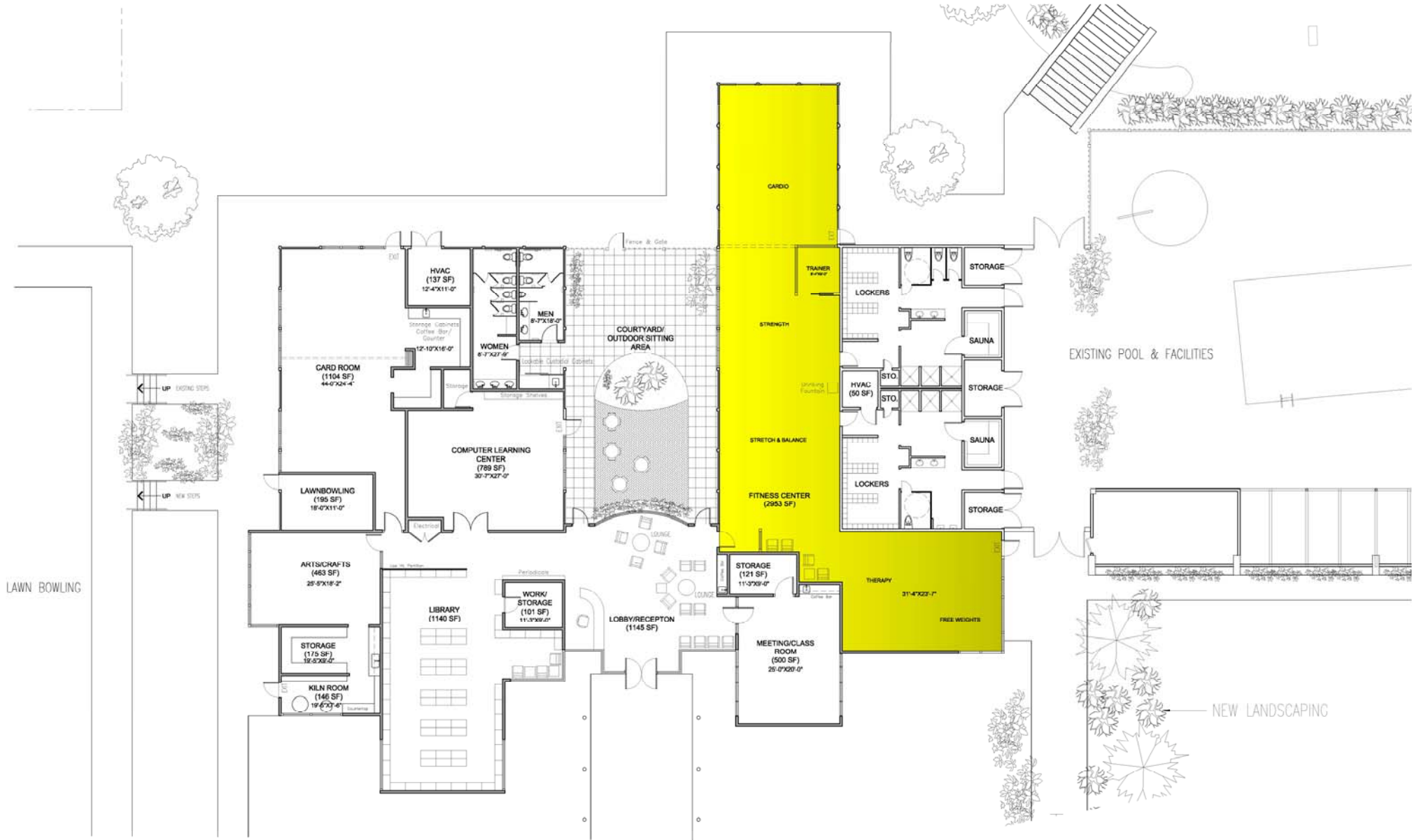
ARCHILOGIX
DESIGN AND DEVELOPMENT GROUP



LAWN BOWLING

EXISTING POOL & FACILITIES

NEW LANDSCAPING



LAWN BOWLING

EXISTING POOL & FACILITIES

NEW LANDSCAPING

UP EXISTING STAIRS

UP NEW STAIRS

CARD ROOM (1104 SF)
44'-0" x 24'-4"

HVAC (137 SF)
12'-4" x 11'-0"

MEN 8'-3" x 16'-0"

WOMEN 8'-7" x 27'-0"

COURTYARD/
OUTDOOR SITTING
AREA

CARDIO

STRENGTH

STRETCH & BALANCE

FITNESS CENTER (2953 SF)

STORAGE (121 SF)
11'-3" x 29'-0"

MEETING/CLASS ROOM (500 SF)
25'-0" x 20'-0"

HVAC (50 SF)

LOCKERS

THERAPY (31'-4" x 22'-7")

FREE WEIGHTS

LAWN BOWLING (195 SF)
18'-0" x 11'-0"

ARTS/CRAFTS (463 SF)
25'-5" x 18'-2"

STORAGE (175 SF)
12'-5" x 12'-0"

KILN ROOM (146 SF)
19'-6" x 7'-6"

LIBRARY (1140 SF)

WORK/STORAGE (101 SF)
11'-3" x 20'-0"

LOBBY/RECEPTION (1145 SF)

LOCKERS

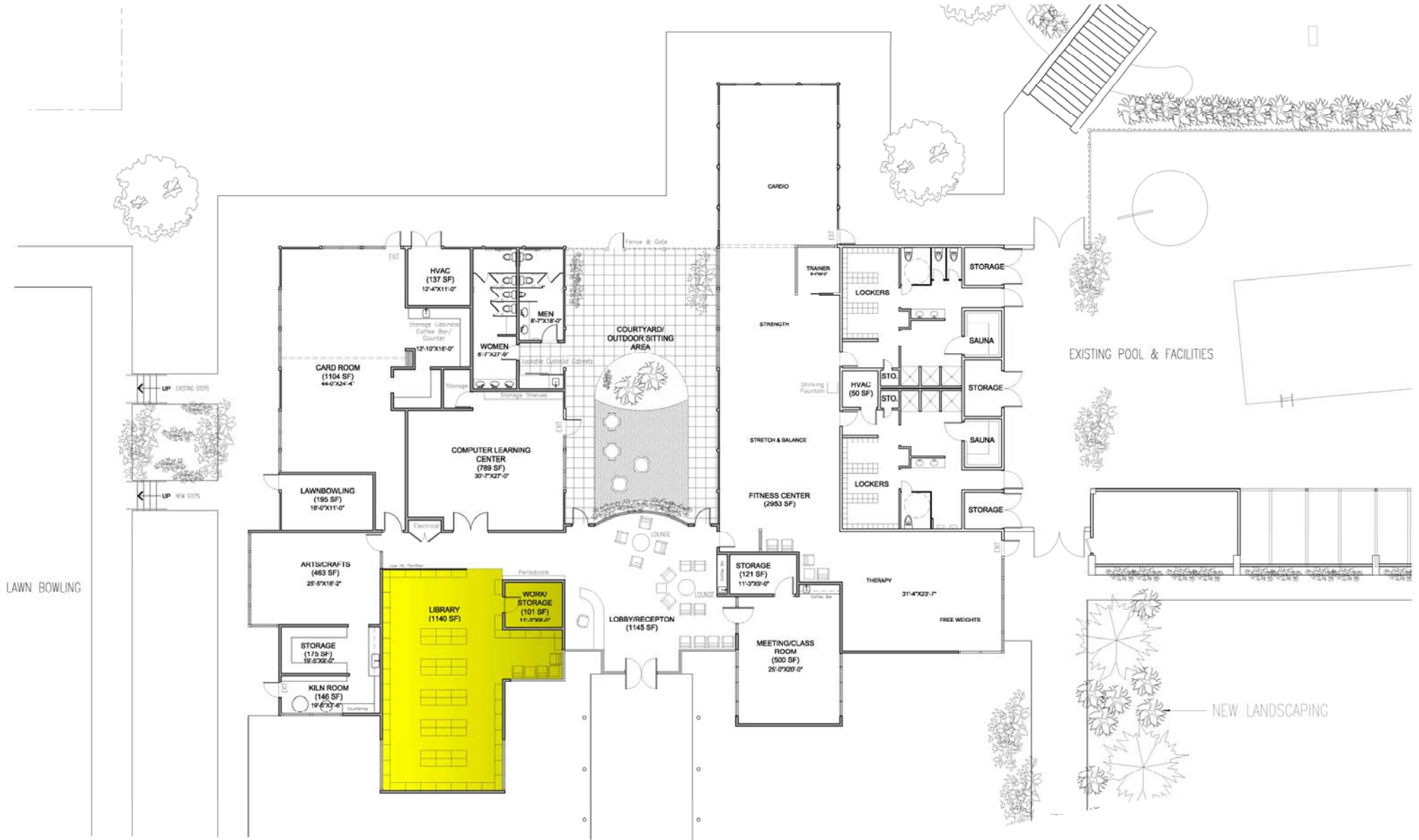
STORAGE

SAUNA

STORAGE

SAUNA

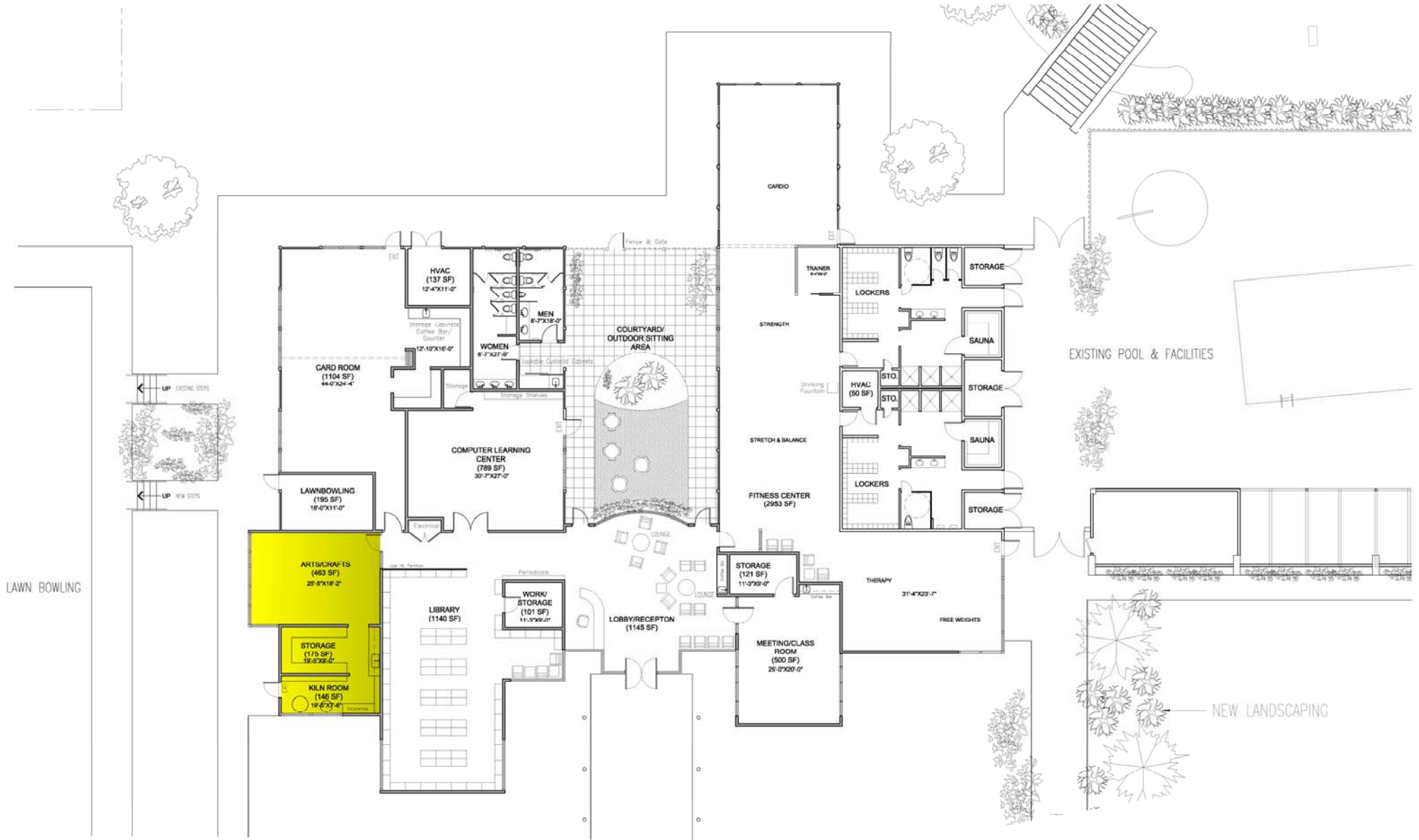
STORAGE



LAWN BOWLING

EXISTING POOL & FACILITIES

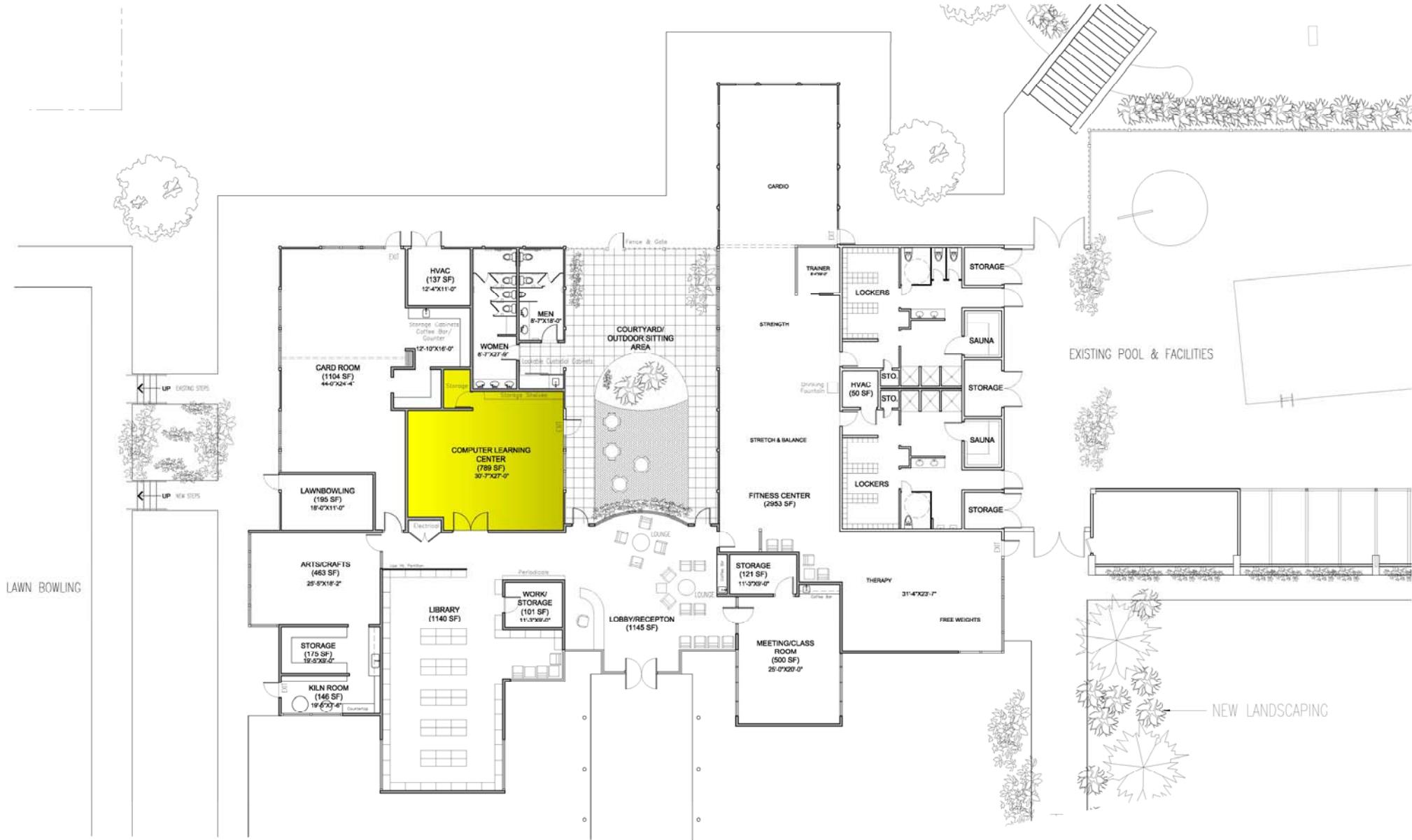
NEW LANDSCAPING



LAWN BOWLING

EXISTING POOL & FACILITIES

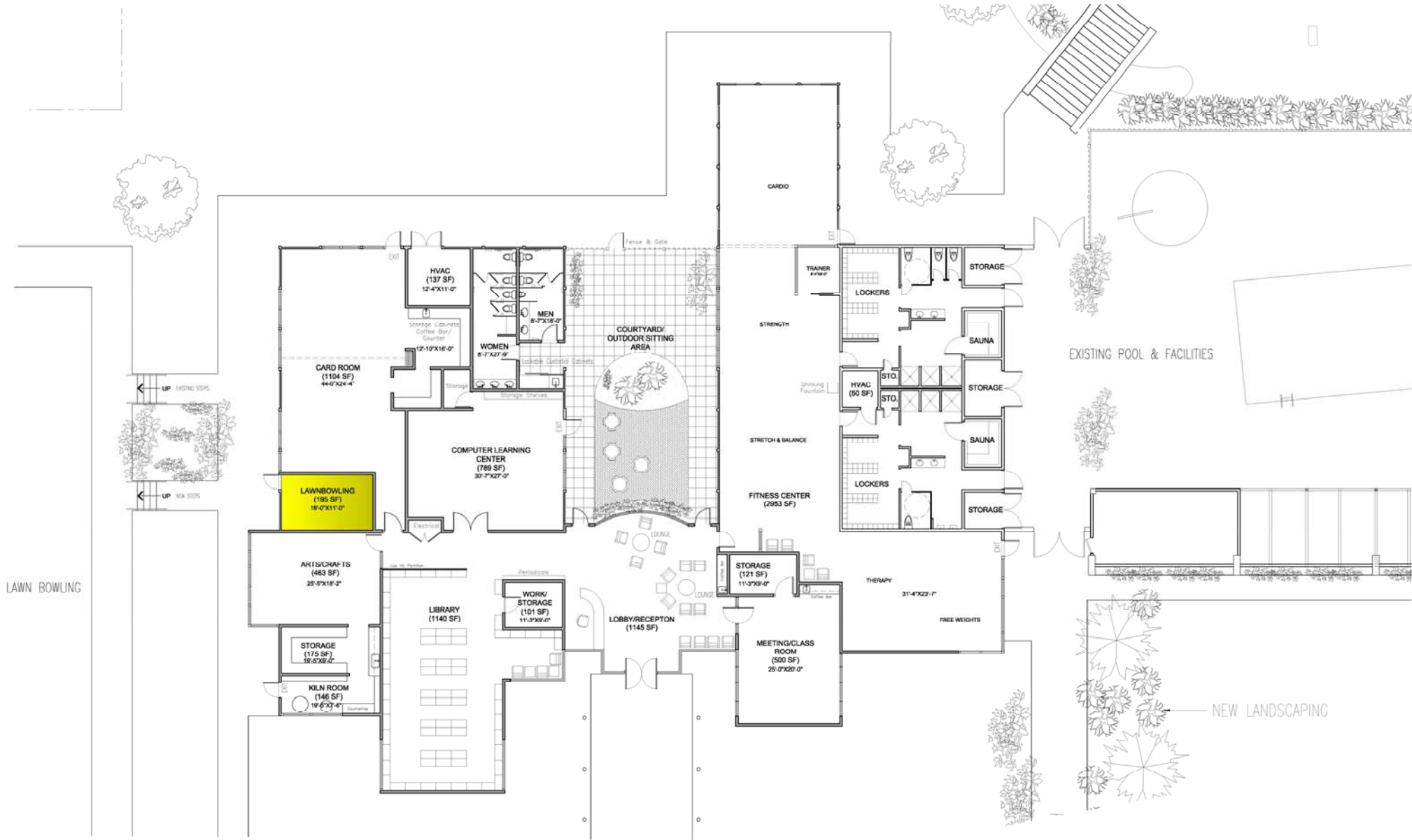
NEW LANDSCAPING



LAWN BOWLING

EXISTING POOL & FACILITIES

NEW LANDSCAPING



LAWN BOWLING

EXISTING POOL & FACILITIES

NEW LANDSCAPING

UP EXISTING STAIRS

UP NEW STAIRS

LAWN BOWLING (195 SF)
18-07x11-02

ARTS/CRAFTS (463 SF)
25-57x18-2

STORAGE (175 SF)
19-57x9-02

KILN ROOM (146 SF)
19-67x7-02

LIBRARY (1140 SF)

WORK STORAGE (101 SF)
11-37x9-02

LOBBY/RECEPTION (1145 SF)

MEETING/CLASS ROOM (500 SF)
25-07x29-02

STORAGE (121 SF)
11-37x9-02

FITNESS CENTER (2953 SF)

STRETCH & BALANCE

STRENGTH

CARDIO

CARD ROOM (1104 SF)
44-07x24-4

COMPUTER LEARNING CENTER (789 SF)
30-77x27-02

WOMEN (875x27-0)

MEN (875x18-0)

HVAC (137 SF)
12-47x11-02

COURTYARD/
OUTDOOR SITTING
AREA

THERAPY (3147x227)

FREE WEIGHTS

LOCKERS

HVAC (50 SF)

LOCKERS

TRAINER (400 SF)

STORAGE

STORAGE

STORAGE

STORAGE

STORAGE

STORAGE

STORAGE

STORAGE

STORAGE

STORAGE

STORAGE

STORAGE

STORAGE

STORAGE

STORAGE

STORAGE

STORAGE

STORAGE

STORAGE

STORAGE

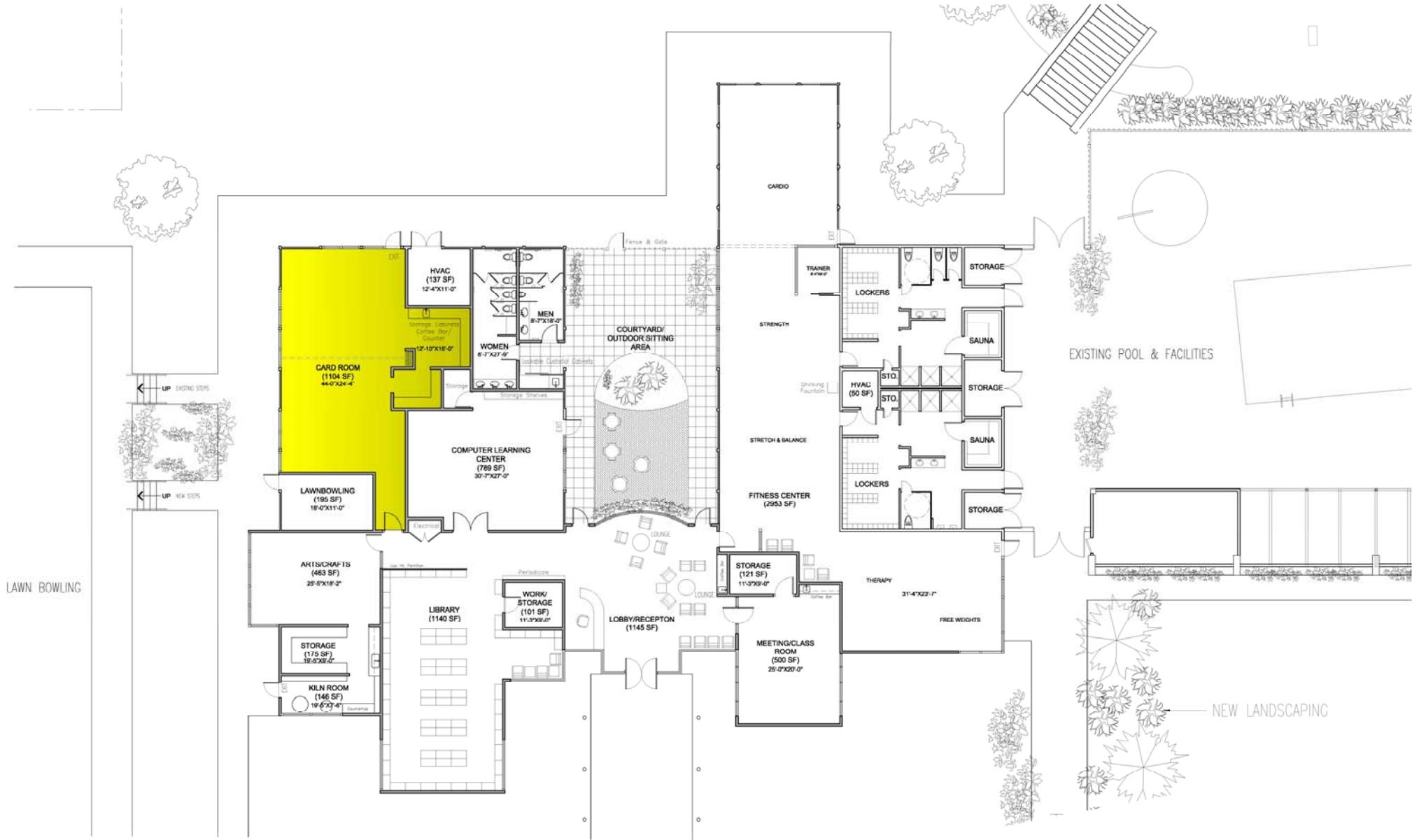
STORAGE

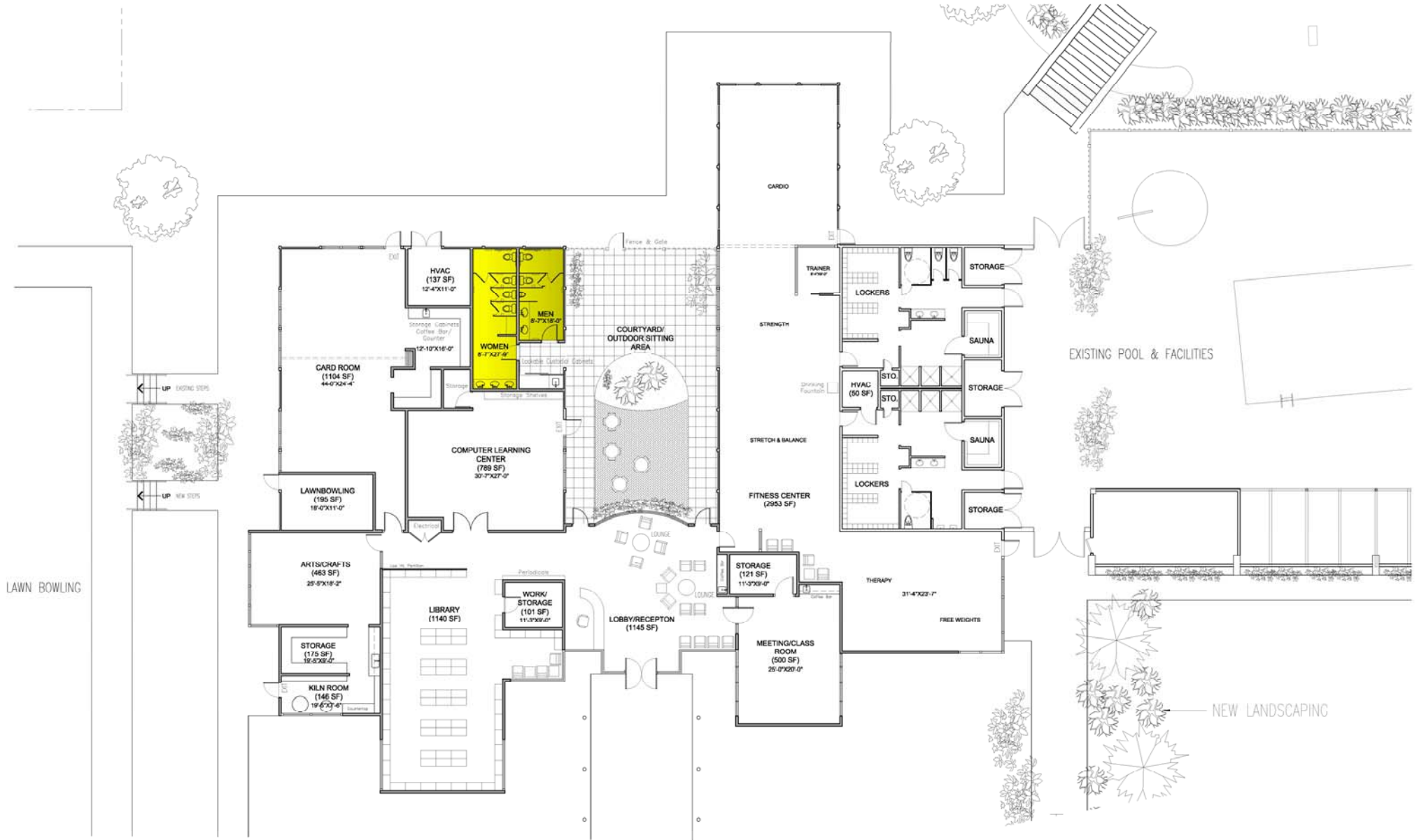
STORAGE

STORAGE

STORAGE

STORAGE









View from Parking Lot



View from Bowling Green

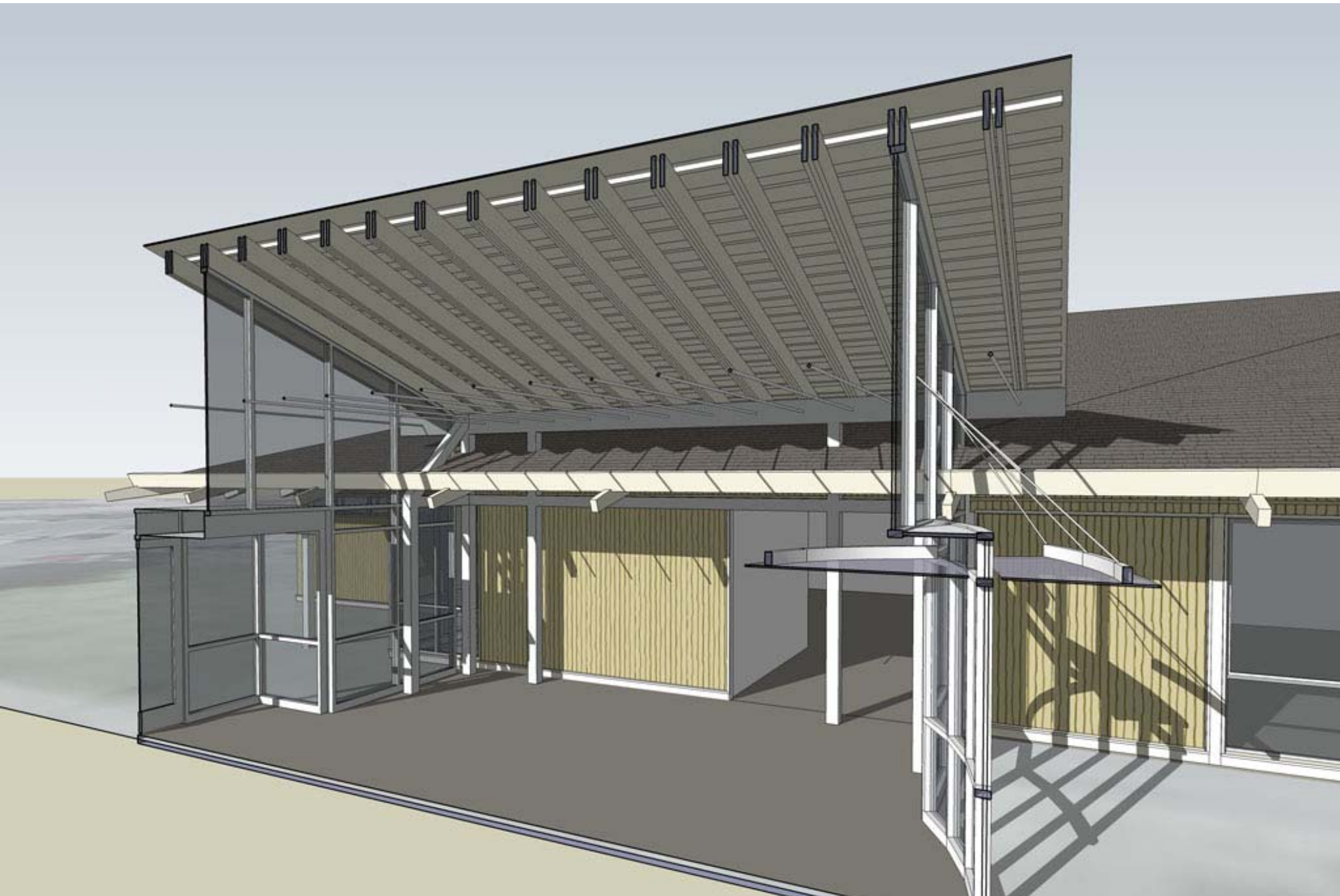


View from Swimming Pool



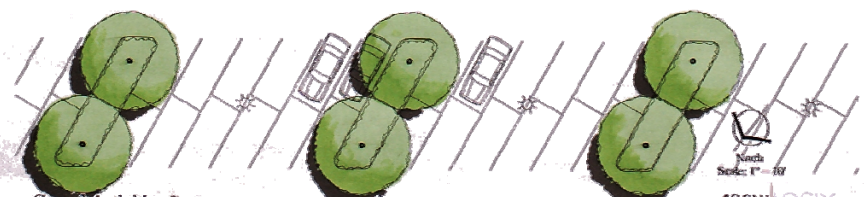
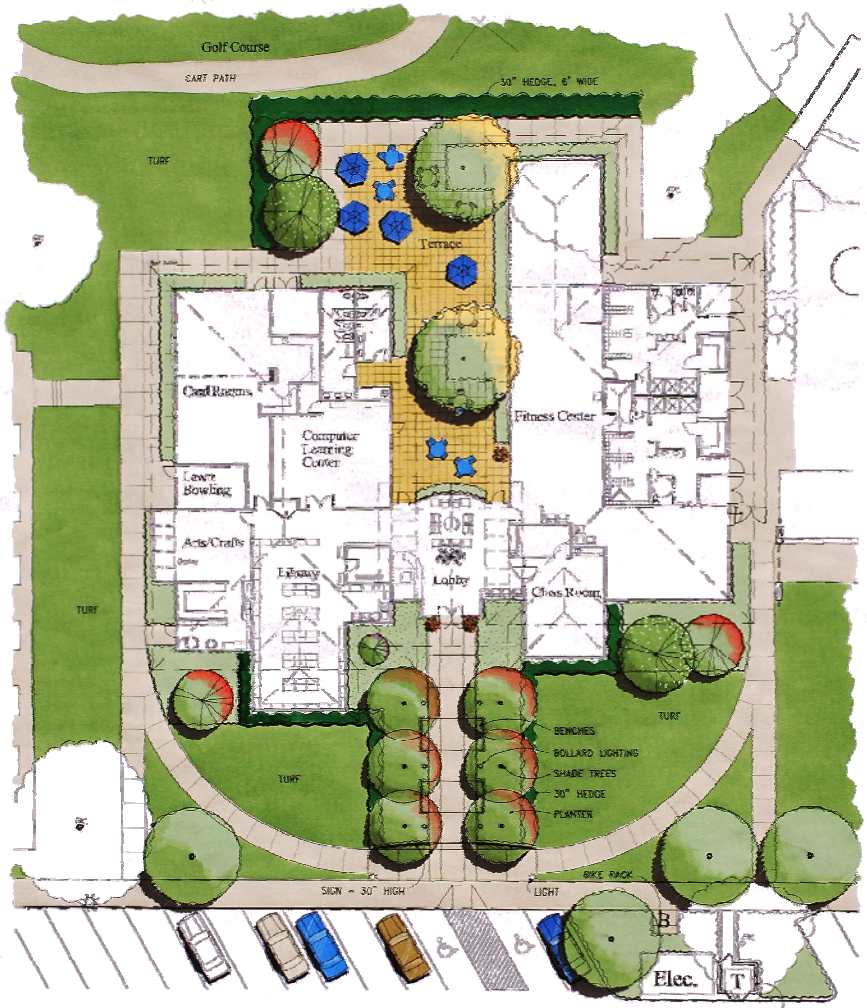
View from Golf Course











Central Activities Center
Conceptual Landscape Development Plan
 Oakmont Village Santa Rosa, California

ARCHILOGIX
 Wieneke & Associates
 May 2007





PROJECT: OAKMONT CENTRAL RECREATION CENTER #05B025
 ARCHITECT: ARCHI / LOGIX DESIGN & DEVELOPMENT GROUP
 LOCATION: SANTA ROSA, CALIFORNIA
 ESTIMATOR: AMARI & ASSOCIATES
 DATE: APRIL 26, 2007

SUMMARY OF ESTIMATE:

REMODEL (E) WOOD STRUCTURE (7140 sf)	\$1,030,989
NEW CONSTRUCTION (4972 sf)	1,552,873
<u>TOTAL PROBABLE CONSTRUCTION COST</u>	<u>\$2,583,862</u>
<u>PROVISION FOR SOFT COSTS @ 30%</u>	<u>775,159</u>
TOTAL PROJECT COST ESTIMATE.....	\$3,359,021

COST QUALIFICATIONS:

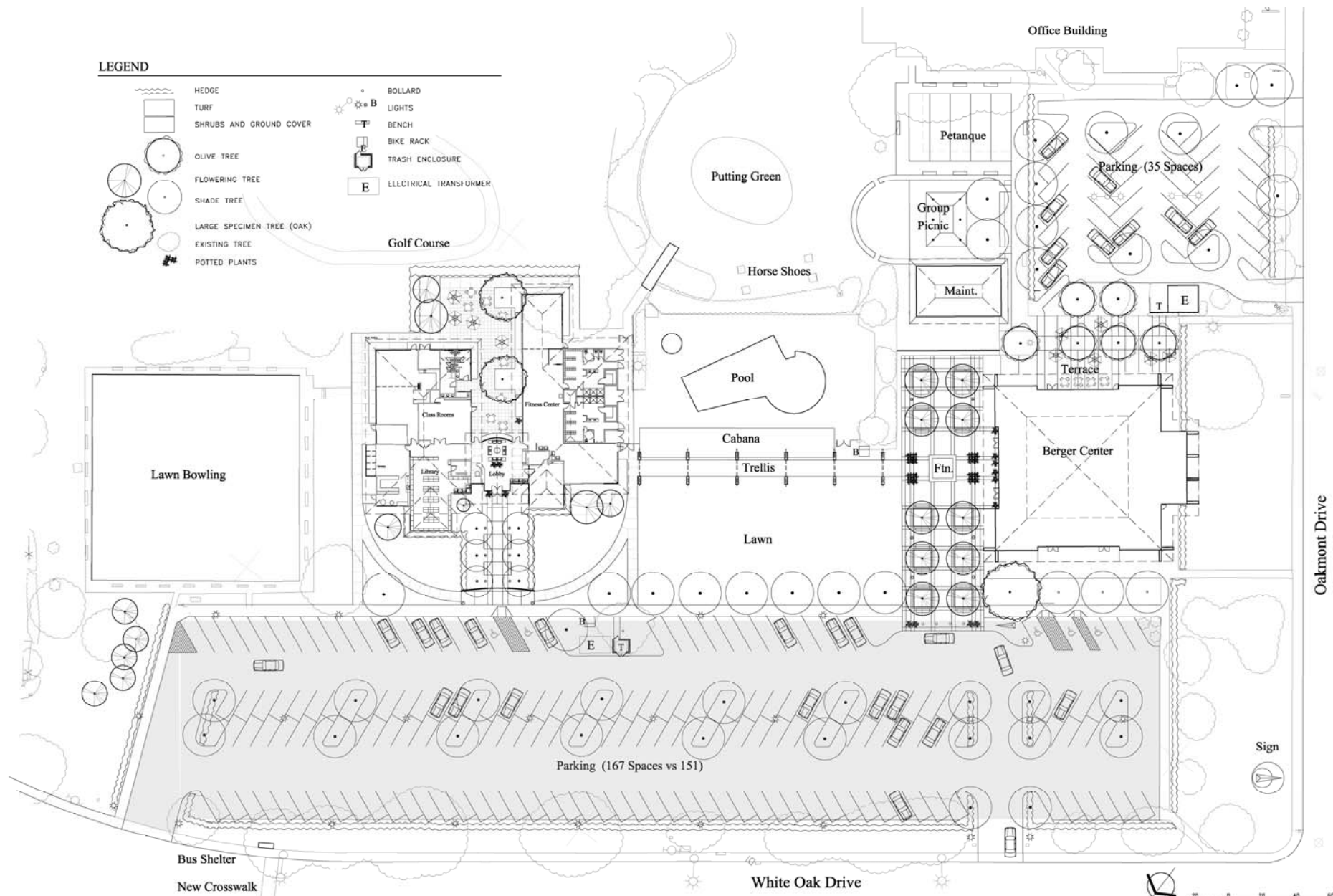
- The construction costs contained within this study are based upon the existing space being unoccupied during the course of construction and the contractor having unobstructed control of the space. If this is not the case, then additional costs allowances will need to be made.
- All costs were derived from the project drawings provided by ARCHI / LOGIX DESIGN AND DEVELOPMENT. Complete engineered drawings or specifications were not provided and hence, the cost portrayed here are partially conceptual in nature and subject to change as the design is further developed.
- Assumptions and allowances were made with regard to material and system quality and portrayed without benefit of specifications. These costs can change based on the evolution of the project design.
- It is assumed that this project will be competitively bid. Competitive bidding is receiving bids from at least (5) general contractors and (3) responsive bids from major subcontractors, such as, mechanical, electrical, framing, etc.
- This is an opinion of probable cost. Additional cost estimates should be made during design development and construction document phases to track costs.
- This estimate includes only some "hardscape" portions of landscaping costs. An additional amount should be allowed for trees, shrubs and hedges or changes to lawns.
- This estimate does not reflect costs required to re-stripe and re-landscape portions of the existing parking lot to meet additional City parking requirements.

PRELIMINARY
 CONSTRUCTION COST ESTIMATE

CENTRAL ACTIVITIES CENTER

ITEM	DESCRIPTION	UNIT	EST. QTY.	UNIT PRICE	EXTENDED AMOUNT
1	DEMOLITION	LS	1	10,000.00	10,000.00
2	FINE GRADING	SF	13,600	0.10	1,360.00
3	WEED ABATEMENT	SF	13,600	0.20	2,720.00
4	SOIL PREPARATION	SF	13,600	0.20	2,720.00
5	MULCH	SF	4,100	0.35	1,435.00
6	TABLES W/4 CHAIRS (4 UMBRELLAS)	EA	12	2,000.00	24,000.00
7	TRASH CONTAINERS	EA	4	800.00	3,200.00
8	BIKE RACK	EA	1	800.00	800.00
9	LIGHTING	LS	1	18,000.00	18,000.00
10	FACILITY SIGN	LS	1	12,000.00	12,000.00
11	CONCRETE SIDEWALKS, 4"	SF	7,700	6.00	46,200.00
12	IRRIGATION SYSTEM	SF	13,600	2.00	27,200.00
13	TURF	SF	9,500	2.50	23,750.00
14	HEDGES (5GAL/30"O.C.)	EA	175	28.00	4,900.00
15	SHRUB PLANTING	SF	4,100	4.00	16,400.00
16	TREES, 24 IN. BOX	EA	9	450.00	4,050.00
17	TREES, 36 IN. BOX	EA	8	900.00	7,200.00
18	90-DAY LANDSCAPE MAINTENANCE	SF	13,600	0.21	2,856.00
SUBTOTAL					\$ 208,791.00
19	15% CONTINGENCY	LS	1	31,318.65	31,318.65
TOTAL ESTIMATE					\$ 240,109.65





LEGEND

- | | | | |
|--|---------------------------|--|------------------------|
| | HEDGE | | BOLLARD |
| | TURF | | LIGHTS |
| | SHRUBS AND GROUND COVER | | BENCH |
| | OLIVE TREE | | BIKE RACK |
| | FLOWERING TREE | | TRASH ENCLOSURE |
| | SHADE TREE | | ELECTRICAL TRANSFORMER |
| | LARGE SPECIMEN TREE (OAK) | | |
| | EXISTING TREE | | |
| | POTTED PLANTS | | |

Central Recreation Center
Conceptual Landscape Development Plan
 Oakmont Village Landscape Master Planning Projects

